



## Architecture Breakout Session

J. Borbinha, D. Castelli, N. Fuhr, M. Mahey, P. Pagano,  
A. Powell, H. Schuldt, C. Thanos, T. van Veen

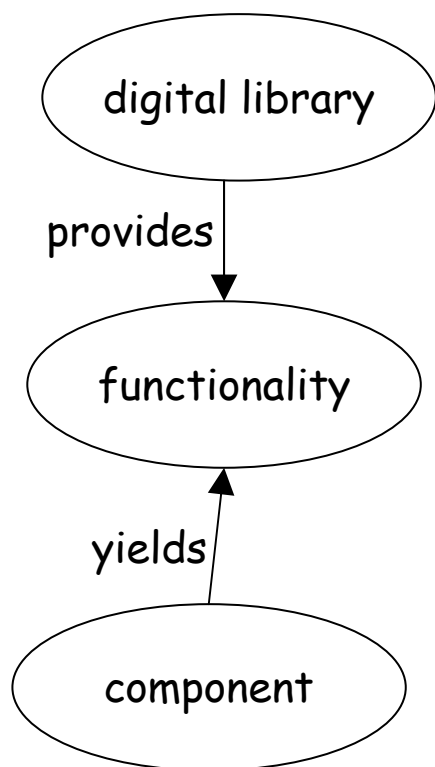
# Top-down vs. Bottom-up ...

- The Reference Model follows a bottom-up approach
  - Starting with users and user functionality, identifying components, etc ...
- Top-down considers processes and end user requirements
  - Identify relationships between components
    - How do they interact, SLAs, ...
  - Validate the components that have been identified / define them in an abstract way
  - Combine both approaches

## ... Top-down vs. Bottom-up

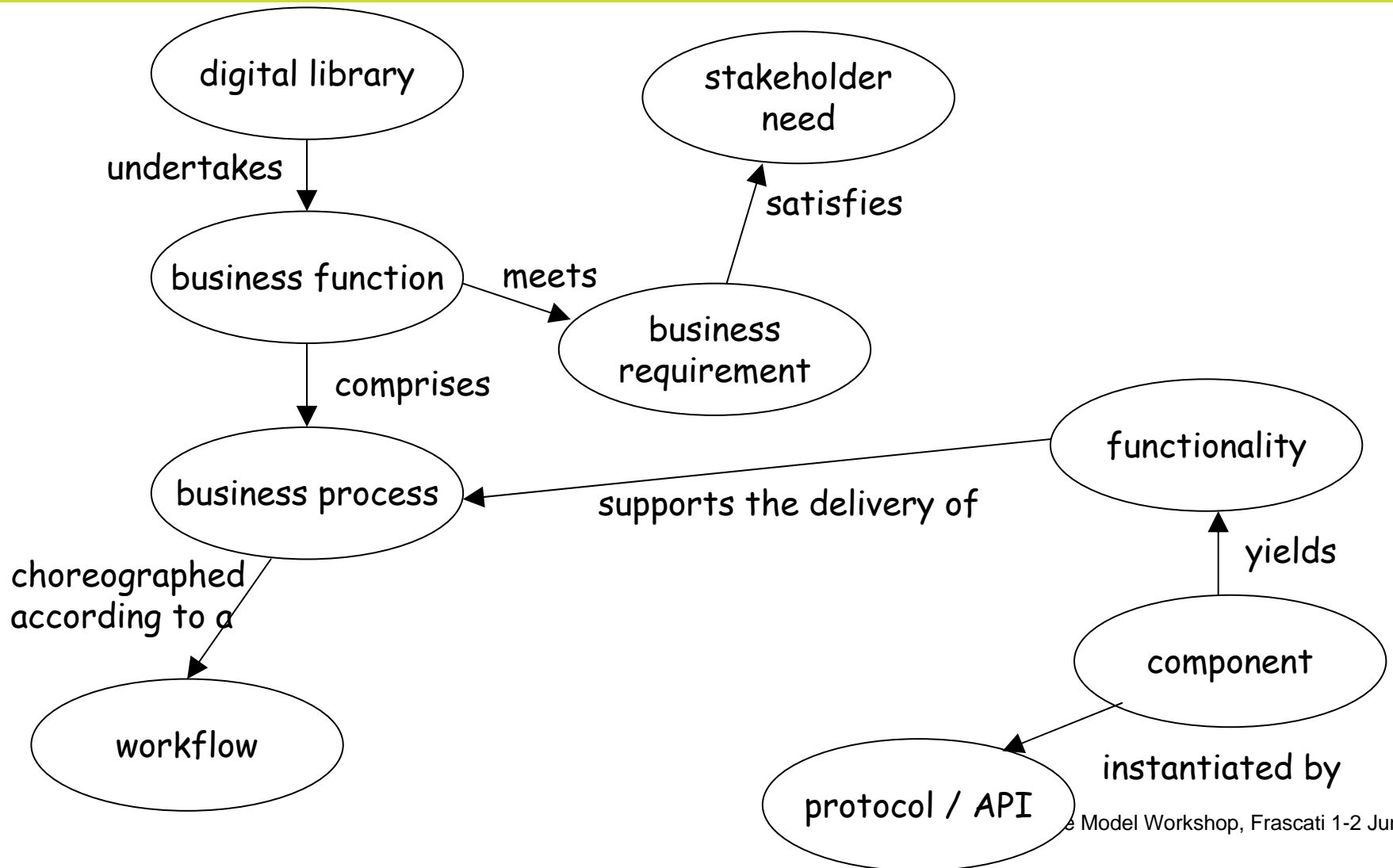
- Exploit for a methodology to derive a DL Architecture from the Reference Architecture based on user requirements

# Current concept maps to simplistic?

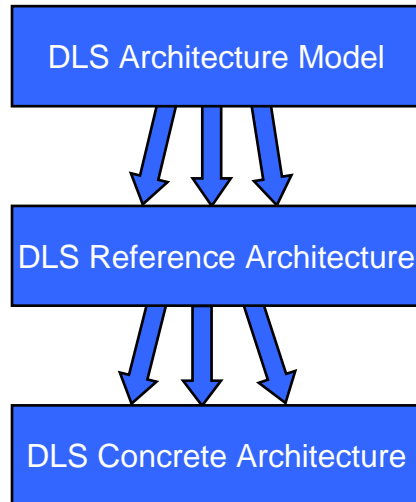


- current concept maps have something like this (e.g. fig 11, page 34)...
- too simplistic?
- 'functionality' provided by the DL is not that directly yielded by the 'component'
- no 'business requirement', user-needs or process analysis from which to derive 'components'
- therefore difficult to justify choice of 'components' in reference architecture design
- e.g. why does reference architecture design contain an 'OAI harvester' component?

# Possible alternative concept map?



# DelosDLMS Experience



- Clarify the relationships between the different levels (reference implementation / reference model)
- Use description of DelosDLMS (in another document?) to explain the Reference Architecture and to give an example on how to work with it

## Other comments

- section 5 (reference architecture) doesn't sit comfortably with the rest of the document
- linkages with rest of document not clear enough?
- in particular not clear what is 'example implementation', what is 'reference'?
- gets concrete very quickly
- need to define components in abstract way – then say that these 'abstract components' can be instantiated using particular protocols and/or APIs