



Semantic interoperability via ontology mapping

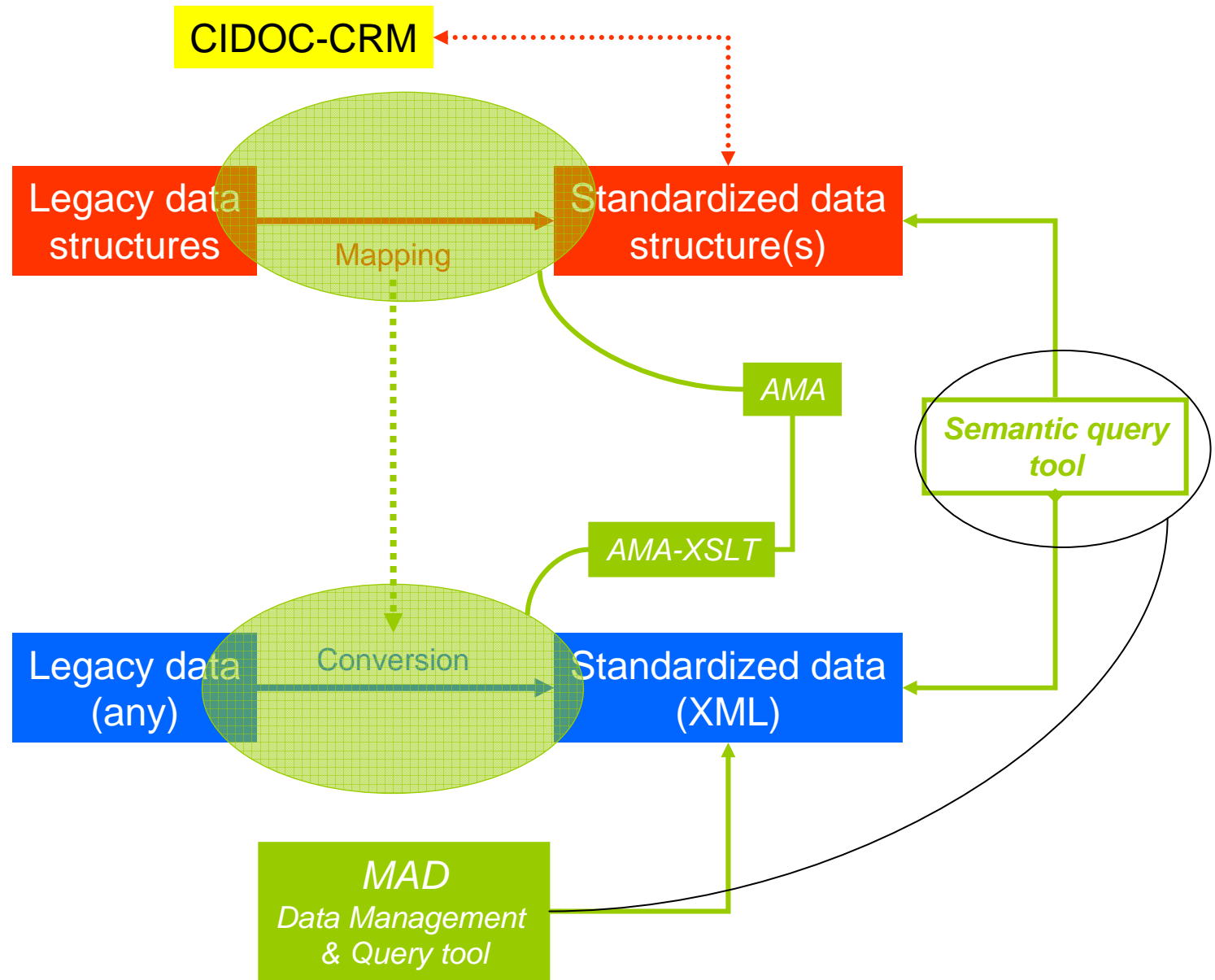
Andrea D'Andrea - Franco Niccolucci
EPOCH

dandrea@unior.it – niccolucci@unifi.it

Tirrenia – 15 Febbraio 2007

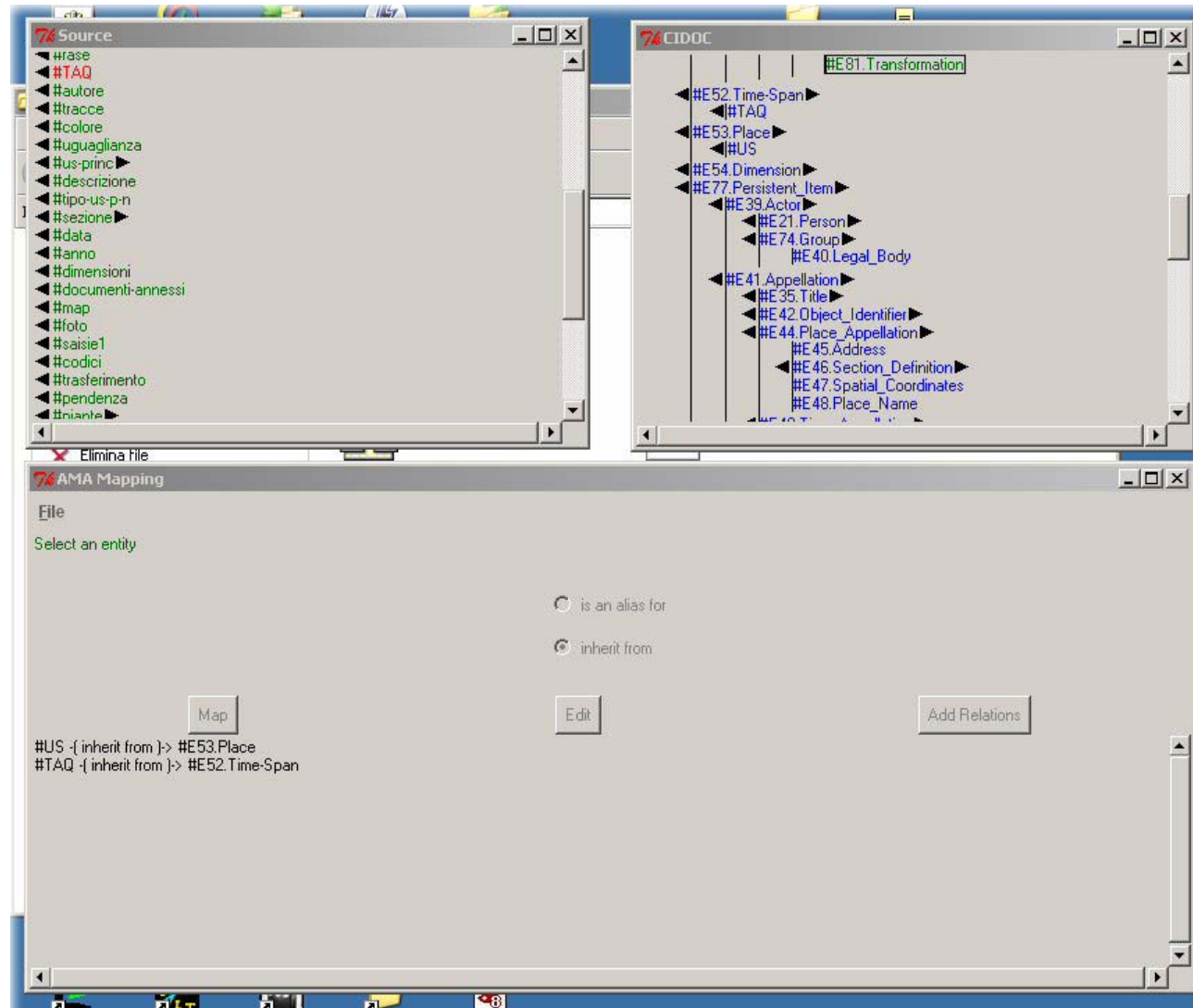


T
H
E
A
P
P
R
O
A
C
H





A
M
A



AMA maps the structure of legacy files to a (new) CIDOC-CRM compliant structure. It generates a map file .map and an XSLT .xsl conversion file.



W
H
O
D
I
D
I
T

Who's working on AMA mapping and related issues:

- Belgium, Flemish Community
 - Workshop planned in mid March
- Israel
 - IAA, “grey” excavation reports
- Italy
 - several teams, archaeological excavation records
- The Netherlands
 - RACM (former ROB), tests planned
- Norway
 - U. Oslo, archaeological texts
- Romania
 - CIMEC (national agency), archaeological databases
- UK
 - English Heritage



M A D

- MAD manages datasets stored as XML documents
- As such, it can manage the results of the conversion to the CIDOC-CRM compliant mapping
- It has all the standard functionalities of a data management system
- Datasets may be distributed
- The user interface may be easily created, *or generated automatically from a description file (e.g. the XML schema)*



Build your query

CIDOC-CRM Main Subjects

[Root](#) | [E18.Physical Thing](#) | [E53.Place](#) | [E2.Temporal Entity](#) | [E39.Actor](#) | [E35.Event](#) | [E28.Conceptual Object](#) |

| | | | |
|--|---|---|---|
| <p>Subjects E2.Temporal Entity E52.Time-Span E53.Place E54.Dimension E77.Persistent Item</p> | <p>Predicates type value comment label isDefinedBy seeAlso member P129B.is subject of P136B.supported type creation P137B.exemplifies P138B.has representation P140B.was attributed by P141B.was assigned by P15B.influenced P17B.motivated P1F.is identified by P67B.is referred to by P2F.has type P3F.has note P41B.was classified by P62B.is depicted by P70B.is documented in</p> | <p>Objects E31.Document E32.Authority Document KY7.US Form]</p> | <p>1022 <input type="text" value="Set"/></p> |
|--|---|---|---|

I am looking for a **E1.CRM_Entity** which **P70B.is_documented_in** the **E31.Document** containing '1022' [Clear and restart](#)

Semantic queries may be generated basing on the data structure ...



EPOCH

SEMANTIC QUERY

MAD

Semantic Web Browser

1 filter criterion

- **type: E28.Conceptual_Object** (remove) [add more]

Order Commands

Advanced Query

259 items

sorted by URI [A to Z]

« previous 1 2 3 4 5 6 7 8 9 10 ... 26 next »

US 19001

[URI]

| | |
|--------------------------------------|--|
| label ↗ | Q US 19001 |
| P1F.is_identified_by ↗ | Q 19001 Q Codici occupation (focus on these values) |
| P2F.has_type ↗ | Q Tipo positivo-negativo |
| P43F.has_dimension ↗ | Q pendenza nord |
| P67B.is_referred_to_by ↗ | Q Scheda US 19001 |
| P70B.is_documented_in ↗ | Q Scheda US 19001 |
| P92B.was_brought_into_existence_by ↗ | Q Definition event of the US 19001 |
| P94B.was_created_by ↗ | Q Definition event of the US 19001 |

Q Type here to search

label [click to expand]

P1F.is_identified_by [click to expand]

P67B.is_referred_to_by [click to expand]

P70B.is_documented_in

Type here to filter

- Scheda US 19001 (1)
- Scheda US 19002 (1)
- Scheda US 19003 (1)
- Scheda US 19004 (1)
- Scheda US 19005 (1)
- Scheda US 19006 (1)
- Scheda US 19007 (1)

P92B.was_brought_into_existence_by [click to expand]

P138B.has_representation [click to expand]

... and then fed into MAD